

Clarke®

Clarke®

S12 & S16 Single Motor
Upright Vacuums



Choose from Five Commercial Upright Vacuums S12, S12PF, S12CC, S16 & S16PF

S12 -

12-inch brush vacuum featuring cloth bag filter that opens at the top

S12PF -

12-inch brush vacuum featuring cloth bag with top-fill paper filter insert

S12CC -

12-inch brush vacuum featuring collector cup with cloth bag filter

S16PF -

16-inch brush vacuum featuring cloth bag with top-fill paper filter insert

S16 -

16-inch brush vacuum featuring cloth bag filter that opens at the top



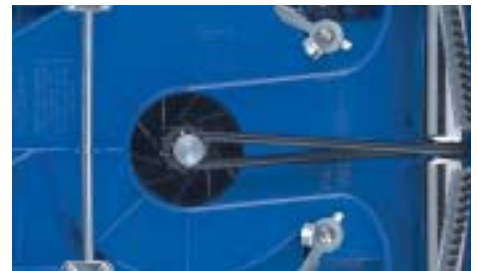
Foot Operated Height Adjustment

Changing brush height is easy and convenient with a right foot-activated, multi-level adjustment lever. Numeric indicator easily identifies height selected.



Foot Lever Release

The left foot-activated handle release provides two positions - midway stop with first pedal touch and full pivot to floor with second pedal touch.



Powerful Vac Motor

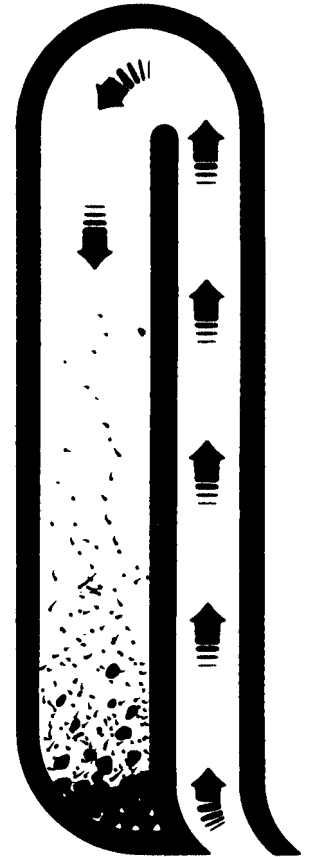
Powerful 7 or 9 amp continuous-duty motor delivers air movement at 89 cubic feet per minute. High-impact, shock-resistant composite impeller provides reliability and long motor life.

*Soft Touch Handle Grip
with finger recess comfort*

*Handle Activated On/Off
thick gauge metal nickel
plate construction*

*Quick Release Cord Wrap
for long 50 ft. power cord*

*Latest in top-opening bag filtration @ up
to 1 micron, with 98 % efficiency*



*No-clog bottom
entry but with top-
fill deposit design
advantages*

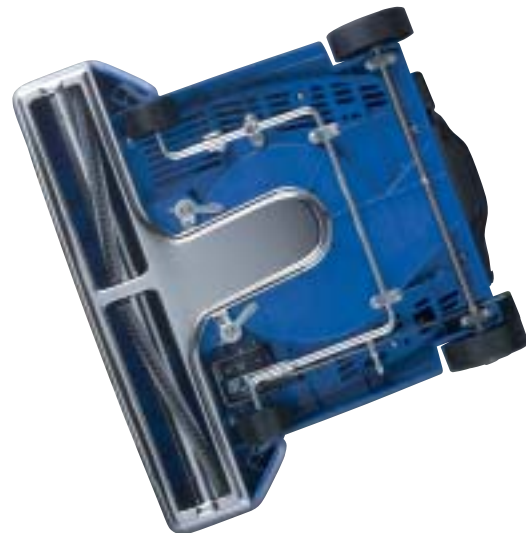
*Durable Composite housing construction
with non-marking bumper*

*Large 3 in. wheels provide easy
transport over thresholds and stairs*

*Ultra Low 2.75" Profile allows
3.75" of reach for under counter
cleaning access*

Easy-to-Access Brush and Belts

Belt, brush and impeller offer no-tool access, and chevron style brush features replaceable bristle strips.



S12, S12PF, S12CC, S16 & S16PF

Upright Vacuums

Clarke®



KEY FEATURES

- Three models
- Cloth bag or bag with collector cup
- Durable composite construction
- Low profile
- No-tools access to brush and belts

SPECIFICATIONS

Model	S12	S12PF	S12CC	S16	S16PF
Part Number	03058A	03112A	03082B	03116A	03114A
Motor (amp)	7 continuous-duty		7 continuous-duty	9 continuous-duty	
Machine Operating (amp)	5.5 Amp		5.5 Amp	7.5 Amp	
Air Movement	89 cfm		79 cfm	89 cfm	
Filtration @ 98% efficiency	3 micron	1 micron	3 micron	3 micron	1 micron
Filter Style	Top-open cloth	Paper Filter Bag	Cloth and Dirt collector cup	Top-open cloth	Paper Filter Bag
Maximum Sound Level	70 db		70 db	74 db	
Handle Weight @ 31.5 in.	1.1 lbs.		1.1 lbs.	1.1 lbs.	
Weight w/o Power Cord	15 lbs.		15 lbs.	16 lbs.	
Dimensions (L x W x H)	14 x 13 x 45		14 x 13 x 45	14 x 17 x 45	
Height Profile Over Brush	2.75 in.		2.75 in.	2.75 in.	
CRI Certification		Green Label	Green Label		Green Label
Warranty	1 Year Parts and Labor				

WHO USES THIS MACHINE?

- Public facilities
- Hospitals
- Schools
- Government
- Hospitality industry
- Cleaning contractors

WHAT DOES IT DO BEST?

- Removes soil from textile flooring and rugs for effective daily maintenance

WHAT MAKES IT EASY TO USE?

- Two-position handle with foot-activated release
- Adjustable foot pedal for brush height settings
- Light 1.1-lb. handle at operating height
- Simple, handle-activated on/off switch.
- Quick-release cord wrap clip
- Comfortable soft-touch handle grip

WHAT ENHANCES ITS PRODUCTIVITY?

- Ultra-low profile
- Non-marking, 50-foot swivel power cord

- Powerful 7 or 9-amp continuous-duty motor

WHAT ADDS TO ITS DURABILITY?

- Heavy gauge steel, nickel-plated handle
- High-impact, shock-resistant composite impeller
- Heavy-duty, long-life motor
- Replaceable brush strips
- Rugged composite housing

WHAT ARE ITS SAFETY FEATURES?

- Underwriter Laboratories listed

WHAT ARE ITS OPTIONAL FEATURES?

- Disposable paper filters



Clarke®

2100 Highway 265
Springdale, Arkansas 72764
www.darkeus.com

DISTRIBUTED BY:

CleanCraft Products, Inc.
800-525-3261
www.cleancraft.com